

JUNE 19>21
HOTEL CONTINENTAL ISCHIA

ACADEMIC PARTNERS



UNIVERSITY
FEDERICO II OF NAPLES



UNIVERSITY OF CASSINO
AND SOUTHERN LAZIO



POLITECNICO OF
MILAN DEIB

THE ORGANIZING COMMITTEE IS PLEASED TO ANNOUNCE THE 27TH EDITION OF THE INTERNATIONAL SYMPOSIUM ON POWER ELECTRONICS, ELECTRICAL DRIVES, AUTOMATION AND MOTION. THE 2024 EDITION WILL BE HELD IN ISCHIA - ITALY - JUNE 19>21, 2024.

> CONTRIBUTIONS

You are invited to participate in the Symposium by presenting technical papers within the delineated framework. In addition to the main topics, papers on other important subjects of the central Symposium themes will be considered for the inclusion in the Scientific Programme. Authors interested in submitting a paper are kindly requested to prepare a provisional full version of the manuscript of five A4-pages at least. Files in pdf format should be uploaded before January 31th, 2024 through the SPEEDAM 2024

Registration Website available at: <http://registration.speedam.org>

The Website will open on October 16th, 2023.

> THE VENUE

Ischia island is located in the Gulf of Naples. It is close to Capri and Procida and not far from Sorrento, Pompeii, Amalfi, Positano, with which it shares their legendary beauty. Thanks to its volcanic origins, Ischia is very famous for its hydrothermal heritage which is one of the richest in the world. Heated by volcanic action and popular since Greek and Roman times, the water from the natural hot springs is very useful for a variety of health treatments. In addition to the thermal parks, Ischia is very rich in plants and gardens, so much so that it is known as the "Green Island". Lovely beaches, fishing villages and friendly locals contribute to the charm of this Southern Italian island, along with the delicious fragrance emanating from the many lemon groves in the surrounding area. Visitors can relax on the superb sandy beaches or explore the boutiques before sitting back and enjoying a drink in one of the stylish bars or cafés. Visitors can also admire the white chalk houses that contrast with the rugged cliffs, dark green vegetation and vivid blue sea.

> REQUESTED TECHNICAL CO-SPONSORSHIP



> GENERAL CO-CHAIRS

Binder A. - Germany
T.U. Darmstadt
Del Pizzo A. - Italy
University Federico II of Naples
Ohsaki H. - Japan
University of Tokyo

> PROGRAM CHAIRS

Brando G., Dannier A.
University Federico II of Naples

> HONORARY CHAIRS

Pagano E. - Italy
Yamada E. - Japan
Miki I. - Japan

> SCIENTIFIC SECRETARIAT

Piegari L. - Politecnico di Milano - DEIB
Tomaso G. - University of Cassino
Tricoli P. - University of Birmingham
Spina I. - University Federico II of Naples

> LOCAL SECRETARIAT

Coppola M., Di Noia L.P., Fedele E.
University Federico II of Naples



TOPICS

> T1 - POWER ELECTRONICS

- Power Electronic Devices
- Converter Topologies, Modelling and Control
- Multilevel converters
- High Frequency Power Converters
- Soft switching
- Renewable Energy Applications
- Fault Tolerant Configurations
- UPS
- Aerospace Applications
- Converter Topologies in PET Application

> T2 - ELECTRICAL MACHINES AND DRIVES

- Modelling, Analysis and Design of Electric Machines
- Finite Element Analysis
- Special Electric Machines and Actuators
- Micromotors
- Electrical Drives Control
- Transformers and coils
- Vibrations and acoustic noise
- Multi-Motor Drive Systems
- High Speed Drives
- Sensorless Control for Electrical Drives
- High Efficiency Drives
- Diagnostics in Electrical Machines and Drives
- Identification Problems
- Integrated Systems
- Inductive Power Transfer
- Home and Low Power Appliances
- High Performance Drives for Aerospace Applications

> T3 - SMART-GRIDS ISSUES

- Concept and Structure of Smart Grids
- Distributed Generation Problems
- Power Electronics in Smart Grids
- Integration of Green Energy Technologies
- Integrated Energy and Communications
- MicroGrids
- PET Integration in Smart Grids

> T4 - ELECTRICAL POWER QUALITY

- Active Filters and Front-Ends
- ElectroMagnetic Compatibility (EMC) and Interference (EMI)
- Power Line Conditioners
- Perturbation Effects
- Power Quality Measurements
- Supply Continuity and Reliability

> T5 - ELECTRICAL TRACTION

- Traction Systems
- Traction Drives
- Linear Motor Drives
- Superconductivity Applications
- Contactless Energy Transmission
- Diagnostics, Reliability, Dependability
- Communication Systems
- PET Sizing and Design in Railway Systems

> T6 - INDUSTRIAL AUTOMATION

- Smart factory
- Field Bus and Communication Systems
- Mechatronic Systems
- Sensing and Testing Techniques
- Intelligent Control and Signal Processing
- Flexible Manufacturing Systems
- Manufacturing and Process Automation Systems

> T7 - RENEWABLE SOURCES OF ENERGY AND COGENERATION

- Integration of Power Systems
- Energy Saving
- Cogeneration (CHP) and Trigeneration (CCHP) Systems
- Hybrid Systems
- Solar, Wind and Geothermal Energy
- Ocean and Wave Energy
- Biomass and Harvesting Energy

> T8 - ENERGY STORAGE

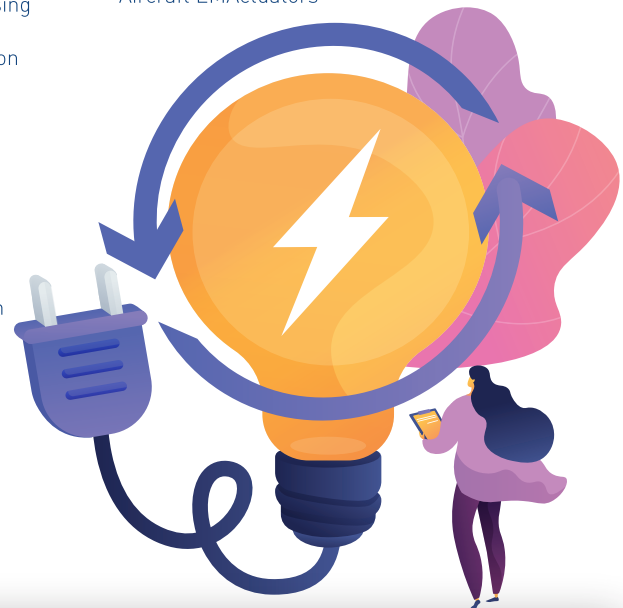
- Storage Battery Systems
- Supercapacitive Energy Storage
- Battery and Supercapacitors Management Systems
- High Speed Flywheels

> T9 - ROAD ELECTRICAL VEHICLES

- On-Board Energy Storage and Advanced Batteries _Hybrid Configurations
- Drives for Road Vehicles
- Plug-in Electric and Hybrid Vehicles
- Battery Charging Infrastructures
- Inductive Wireless Charging
- Automotive Power Electronics
- Fuel Cells Vehicles

> T10 - MARINE AND AEROSPACE APPLICATIONS

- All Electric Ship
- All Electric Aircraft
- Aircraft EMActuators



DEADLINES

31ST JANUARY 2024:
FULL PAPER SUBMISSION

15TH MARCH 2024:
NOTICE OF ACCEPTANCE

30TH APRIL 2024:
FINAL PAPER SUBMISSION